

CONTENTS

Theme	Lesson	Grammar Focus	Page
1. Hello	1	The Imperative	4 - 11
	2	Questions with <i>What</i>	
	3	Questions with <i>What</i>	
	4	Questions with <i>Where</i>	
2. School	1	Questions with <i>What's this?</i>	12 - 19
	2	Questions with <i>Is this?</i>	
	3	Questions with <i>Is it?</i> and <i>What is it?</i>	
	4	Imperatives	
3. Family	1	Questions with <i>Who</i>	20 - 27
	2	Introducing people with <i>This is my ...</i>	
	3	Questions and answers with <i>Is</i>	
	4	Questions with <i>Who is the ...?</i> ; nouns and adjectives	
4. Colors	1	Questions with <i>What ... is this?</i>	28 - 35
	2	Questions with <i>What</i> and <i>do</i>	
	3	<i>There is</i> or <i>There are</i>	
	4	Questions with <i>What is ...?</i> ; answers with <i>I like ...</i>	
5. Toys	1	Questions and answers with <i>What</i> and <i>can</i>	36 - 43
	2	's: the <i>Possessive</i>	
	3	Prepositions of place: <i>in</i> and <i>on</i>	
	4	Imperatives and prepositions of place: <i>in</i> and <i>on</i>	

CONTENTS

Theme	Lesson	Grammar Focus	Page
6. Food and Drink	1	Making requests with <i>May I</i>	44 - 51
	2	Using <i>can</i> to ask for permission	
	3	Using <i>Can</i> for making requests; asking for <i>some</i>	
	4	Questions with <i>Would you like ...?</i>	
7. Animals	1	Questions with <i>that</i>	52 - 59
	2	<i>I love ...</i> and <i>What about you?</i> ; plurals	
	3	<i>Do ...</i> questions and short answers	
	4	Questions with <i>Where</i> and short answers	
8. Places and Directions	1	Questions with <i>Where</i> ; verbs with <i>-ing</i> ; prepositions: <i>to</i>	60 - 67
	2	Questions with <i>Where</i> ; prepositions: <i>on</i>	
	3	Questions with <i>How</i> and the Imperative	
	4	Questions with <i>What</i> ; verbs with <i>-ing</i> ; prepositions: <i>at</i>	
9. Weather	1	Questions with <i>How</i> ; adjectives	68 - 75
	2	Questions with <i>Can</i> and short answers with <i>Yes</i>	
	3	Questions without question words: <i>Are ...?</i> ; adjectives	
	4	Questions with <i>Can - make</i> and <i>go</i>	
10. Feelings	1	Questions with <i>How</i> + Adjectives	76 - 83
	2	Questions with <i>Are</i> + Adjectives	
	3	Questions with <i>Is</i> + Adjectives	
	4	Questions with <i>What</i> + Verbs	



Grammar

The Imperative

We use the imperative when we are giving commands. Your teacher uses imperatives when he/she tells you to do something.

Stand up,

please.



A Complete the words.

stand up sit down hands up hands down be quiet ~~make a line~~

1



m _ a _ k _ e _ a _ l _ i _ n _ e _

2



s _ i _ t _ d _ o _ w _ n _

3



_ h _ a _ n _ d _ s _ u _ p _

4



_ e _ b _ e _ q _ u _ i _ e _ t _

5



_ r _ a _ i _ s _ e _ y _ o _ u _ r _ h _ a _ n _ d _ s _

6



_ r _ a _ i _ s _ e _ y _ o _ u _ r _ h _ a _ n _ d _ s _

**B****Circle the correct words.****1**Hands *up/down*, please.**2***Be/Make* a quiet, please.**3***Hands/Stand* up, please.**4***Stand/Make* a line, please.**C****Rewrite the words in order.****1**down,/Hands/please.
_____**2**a line,/please./Make
_____**3**please./Sit/down,
_____**4**Stand/please./up,
_____**D****Point and say.**

Sit down, please.

1**2****3****4****5****6**



Grammar

Questions with *What*

We can use **What** to ask questions about the alphabet.
We can use **It's** to answer questions about the alphabet.

Question		Answer	
What	letter is this?	It's	letter A.
It's = It is			



A

Match. Say.

It's letter s.

S

•

B

•

R

•

M

•

b

•

r

•

s

•

m

•



B

What letter is this? Use letters from Activity A.

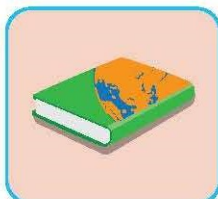
It's letter s.

1



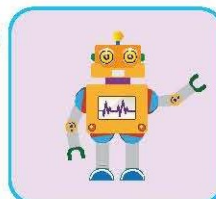
_s_nake

2



__ook

3



__obot

4



__onster

**C****Write and say the next letter.**

What letter is this?

It's letter I.

1

G H _____

2

J K _____

3

C D _____

4

R S _____

5

P Q _____

6

X Y _____**D****Point at a letter. Say the letter. Say a word.**

What letter is this?

It's letter c. Car.

Aa Bb Cc Dd Ee Ff Gg Hh Ii
Jj Kk Ll Mm Nn Oo Pp Qq Rr
Ss Tt Uu Vv Ww Xx Yy Zz



Grammar

Questions with *What*

We can use ***What's*** to ask people's names.
We can use ***My name's*** to answer.

Question		Answer	
What's	your name?	My name's	Alfie.
<p>What's = What is My name's = My name is</p>			



A

Match.

1



•

•

Hello, my name's Mai.

2



•

•

Hello, my name's Nick.

3



•

•

Hello, my name's Alfie.

4



•

•

Hello, my name's Tom.

**B****Number the sentences in order.**

Hello, my name's Mai. What's your name?	1
Nice to meet you.	
Nice to meet you, too.	
My name's Nick.	

**C****Read and circle the correct answers.**

Hello, *your/my* name's Tom.
What/What's your name?

My name/name's Nick.
 Nice to meet *you/me*.

**D****Look and say.**

Hello, my name's James.
 _____ your name?

My _____ Sally.



_____ to meet you.

Nice to _____ you, too.





Grammar

Questions with *Where*

We use questions with **Where** to ask what place someone is from.
We use **I'm from/He's from/She's from** to answer.

Question			Answer	
Where	are	you from?	I'm from	Alpha.
Where	is	he/she from?	He's/She's from	Greenwood.
I'm = I am He's/She's = He is/She is				



A

Match.

Where's he from?

1



He's from Greenwood.



Where's he from?

2



I'm from River Town.



Where are you from?

3



She's from Greenwood.



Where's she from?

4



He's from Alpha.



**B****Read and circle the correct sentence.****1**

Where you from?

Where are you from?

2

Where's he from?

Where he from?

3

Where's she from?

Where she from?

4

I from Alpha.

I'm from Alpha.

**C****Rewrite the words in order.****1**

from?/Where/are/you

Greenwood./from/I'm

2

she/from?/Where's

River Town./She's/from

**D****Think about a person. Where's he/she from? Say.**

He's/She's from ...



Grammar

Questions with *What's this?*

We can use **What's this?** to ask questions about things that are near us.
We can use **It's** when we say the word for something.

Question		Answer	
What's	this?	It's	a camera.



A

Circle the two correct sentences.

1



It's a chair.

2



It's a camera.

3



It's a cupboard.

4



It's a door.



B

Write **?**, **.**, or **!**

1 What__s this__
It__s a cupboard__

2 What__s this__
It__s a door__

3 What__s this__
It__s a chair__



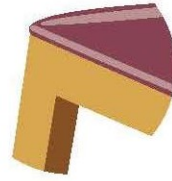
**Complete the questions and sentences.
Circle the correct answer.**

1



What's _____?
It's a *cupboard/board*.

2



It's a *chair/desk*.

3



_____ a *board/door*.

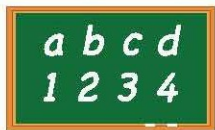
4



_____ *camera/door*.



Close your eyes. Point. Open your eyes. What's this? Say.





Grammar

Questions with *Is this?*

We can use questions with ***Is this*** to ask a question about the correct word for something near us.

We use ***Yes, it is.*** or ***No, it isn't.*** to answer.

We use 'an' with words beginning with **a, e, i, o, u**.
It's **an** eraser.

Question		Answer
Is this	a bag?	Yes, it is.
Is this	an eraser?	No, it isn't. It's a bag.
isn't = is not		



A

Look, read, and circle the correct answer.

1

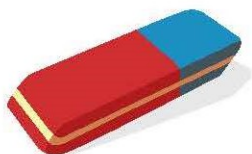


Is this a pencil?

Yes, it is.

No, it isn't.

2



Is this an eraser?

Yes, it is.

No, it isn't.

3



Is this a pen?

Yes, it is.

No, it isn't.

4



Is this a bag?

Yes, it is.

No, it isn't.